

# Platinum Series 3G



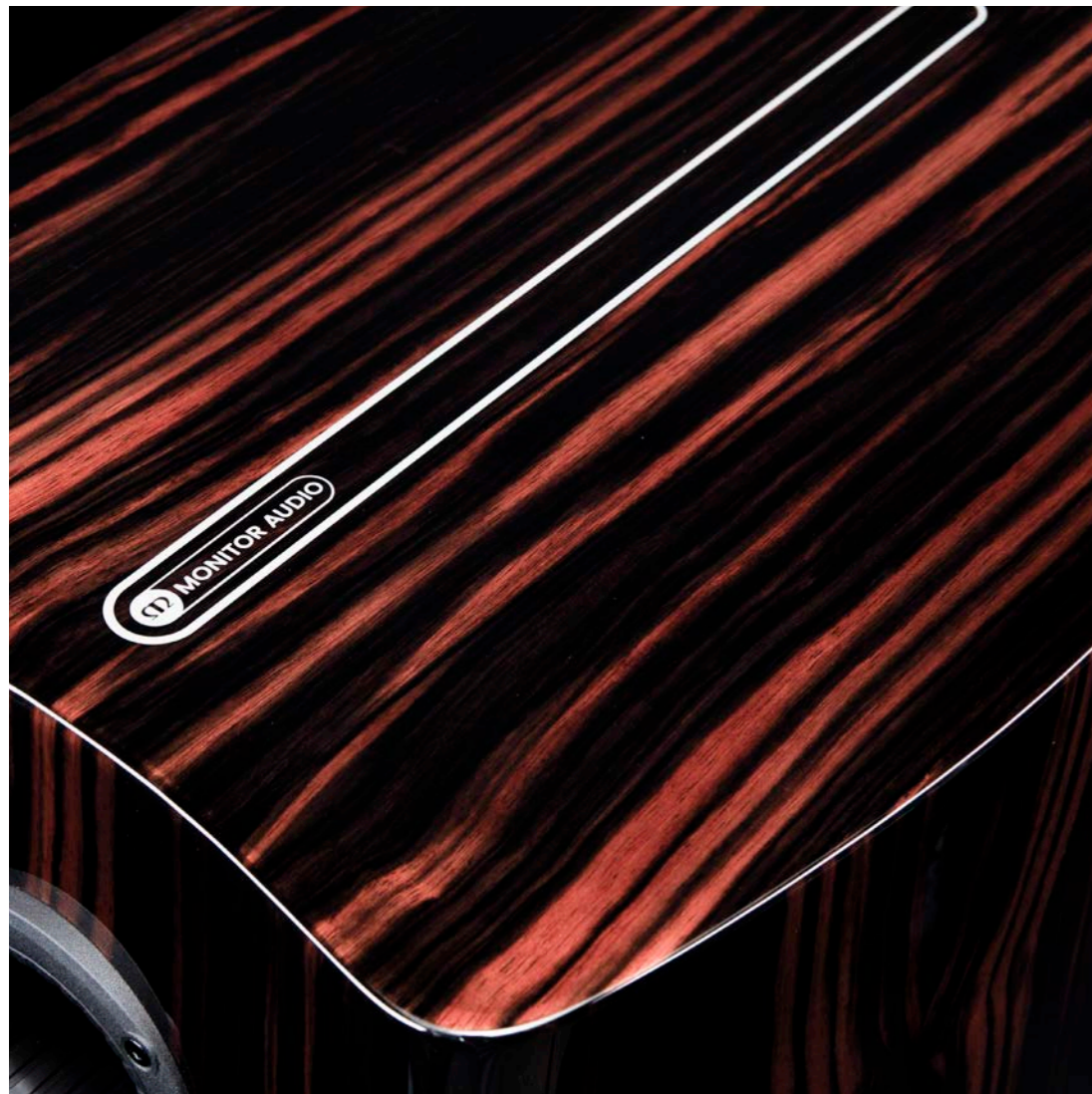
## Objects of Desire

Platinum Series 3G is a culmination of ground-breaking acoustic innovations brought together in a number of expertly crafted designs that celebrate the rich legacy of the Platinum Series.

The range cements Monitor Audio's deserved place within the high-end, premium loudspeaker space and represents a purity of sound and design beautifully entwined – the launch, a highpoint in the brand's 50th Anniversary.

## The definition of elegance

Beautifully detailed and expertly crafted, the industry-leading attention to detail and outstanding quality ensures that each cabinet is as elegant and refined as it is designed for total acoustic performance.



## All-new cabinet design

Constructed using laminated layers of MDF to form a curved and braced super rigid 18-21mm cabinet on the rear with a 36mm thick baffle precision machined to create a unique curved front profile.

The cabinets are then embellished with etched inlays to highlight the craftsmanship, before 16 layers of lacquer are added on top.



Piano Ebony



Pure Satin White

Piano Black





Platinum 200 3G & Platinum C250 3G in Piano Ebony

## A Technical Legacy with Concept 50 Technology

Platinum Series 3G builds on two generations of loudspeaker design, which has consistently evolved at each step. We have introduced a ground-up new MPD tweeter, developed for the 'Concept 50' speaker, which improves on every aspect, as well as improvements to the mid and bass driver cones called RDT III - a further significant development in driver technology.

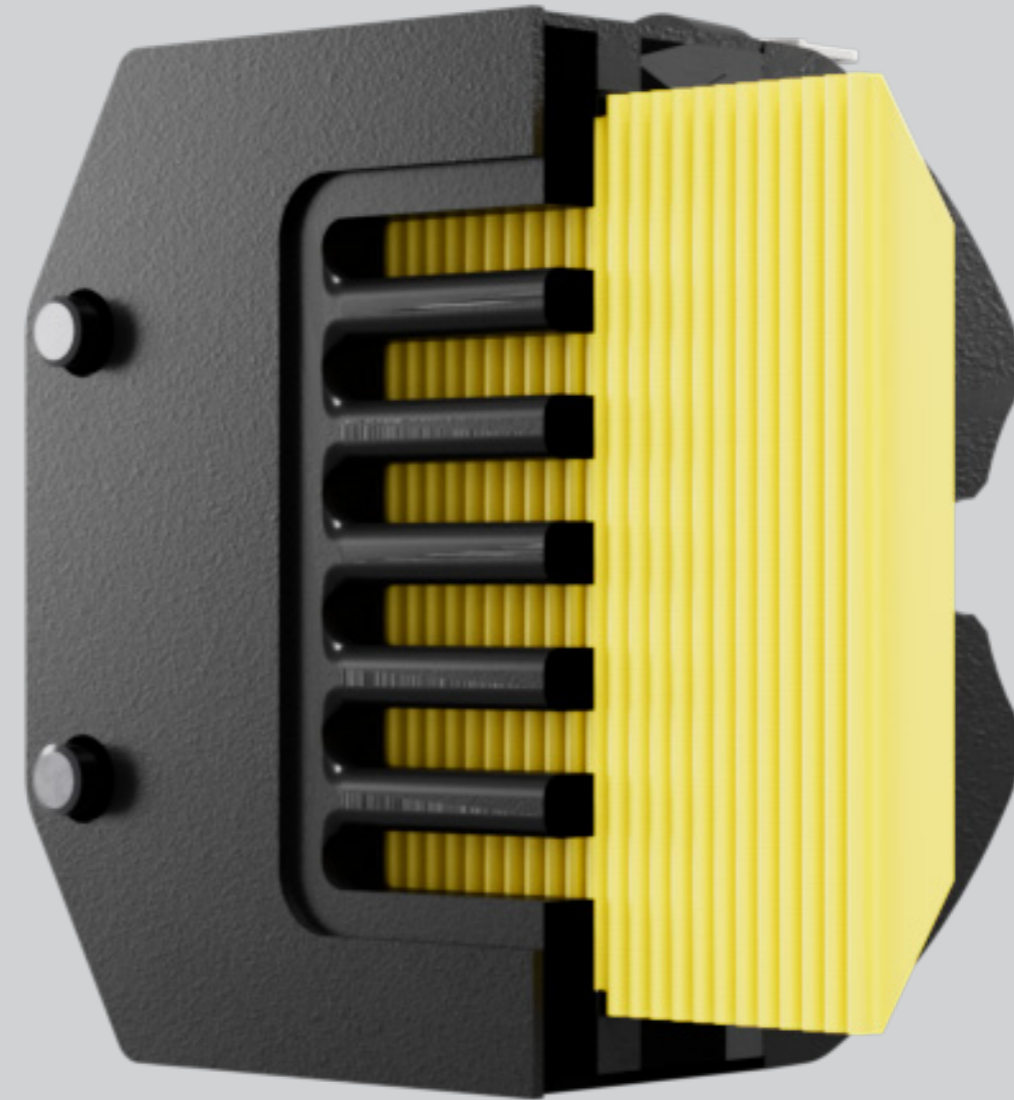
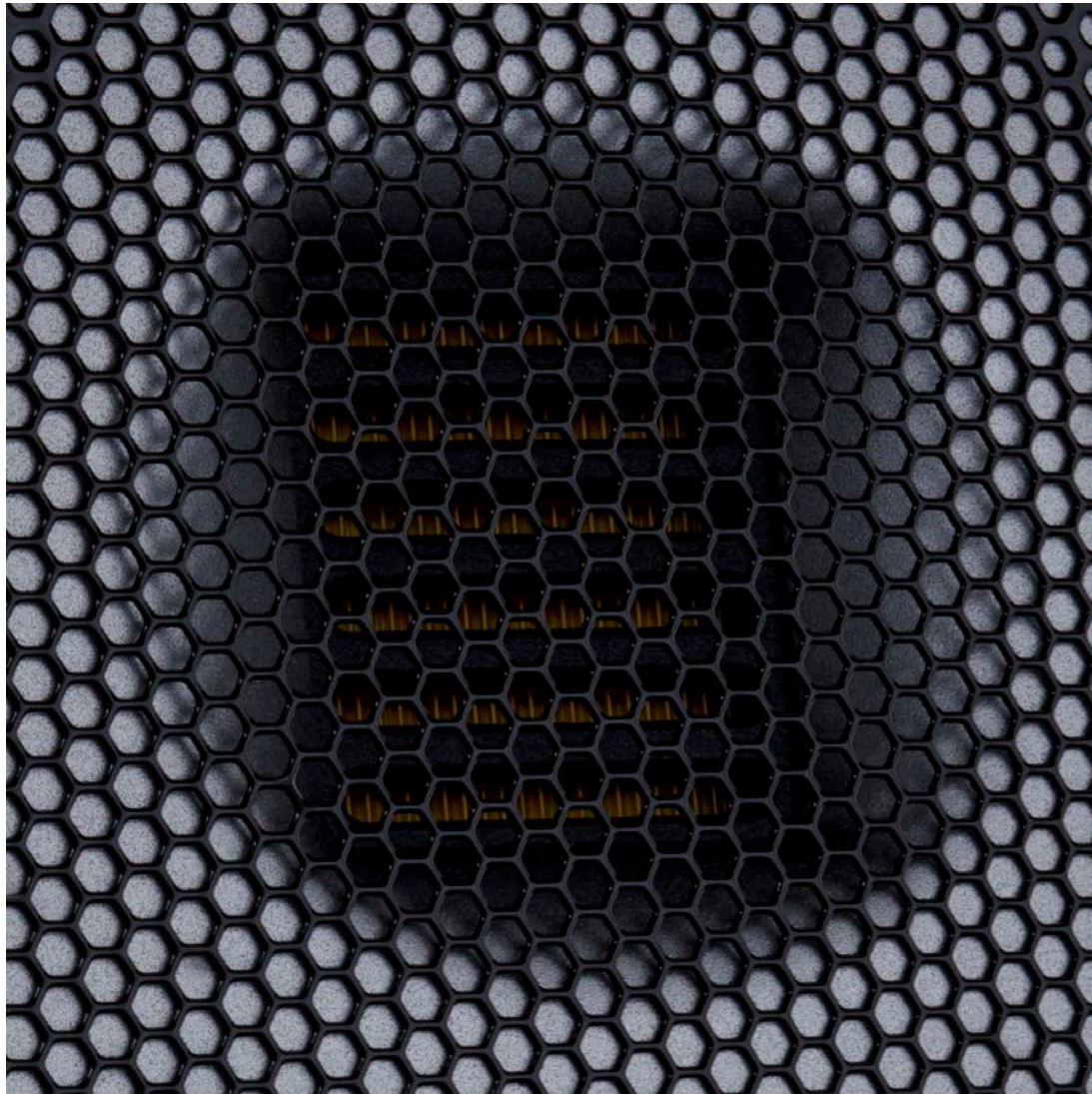


## Pinpoint accuracy for lifelike sound

### New MPD III high frequency transducer

The improvements help to reduce distortion and flatten the frequency response leading to a clear and consistent sound across all your music.

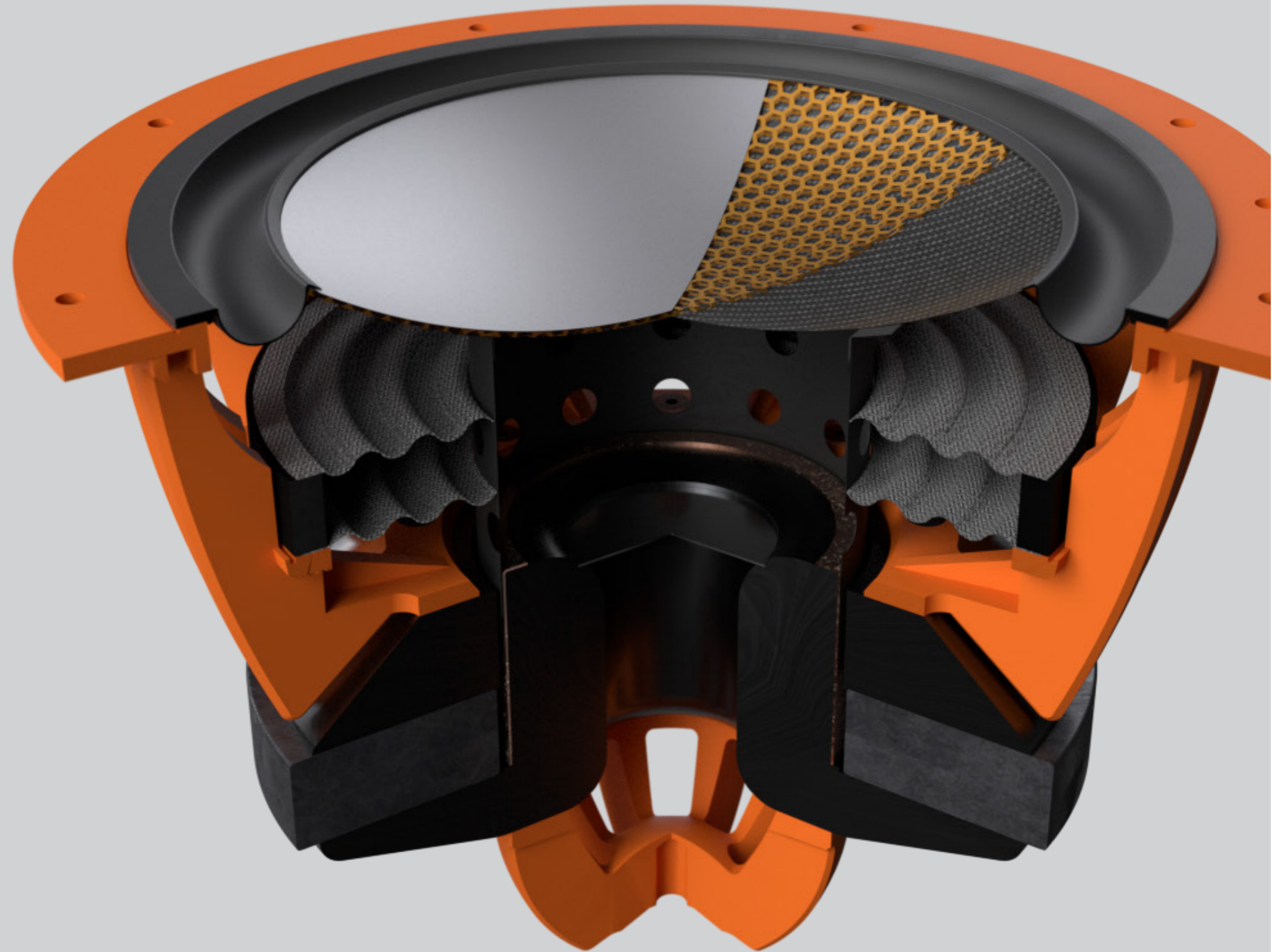
- Developed for our ground-breaking Hyphn loudspeaker
- Micro Pleated Diaphragm (MPD) extends tweeter passband to >60 kHz (compared to >40 kHz for a typical AMT)
- Square radiating area ensures equal directivity in horizontal and vertical planes, resulting in an improved soundstage
- Optimised rear volume to ensure minimal ripple in audible frequency range, with gentle rise on-axis to deliver exceptional detail
- Optimised waveguide to give controlled directivity and radiation impedance matching, further improving soundstage and maximising sensitivity



## Precision perfect

### New Rigid Diaphragm Technology III (RDT II)

- The Rigid Diaphragm Technology III (RDT III) cone has three new optimisations over its predecessor
- New rear layer featuring two uniform layers of carbon fibre skin to reduce cone breakup
- Optimised cone edge treatment to extend passband of drivers
- Optimised rubber surround to reduce cone breakup
- Combined the above improvements significantly increase the useable bandwidth enabling improvements to the crossover and final response of the speaker. This is especially important for the Platinum

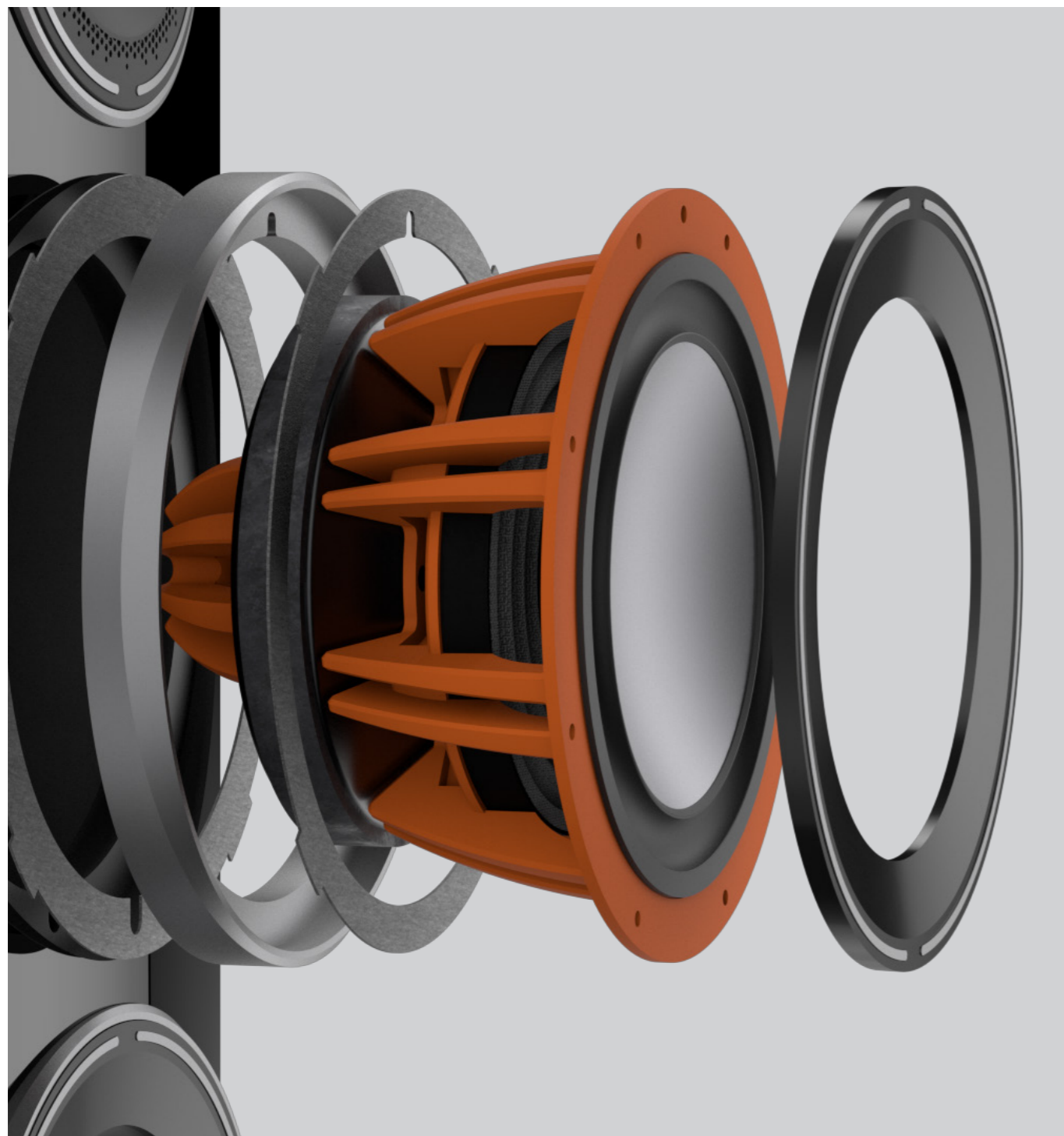




## Clever design is more than skin deep

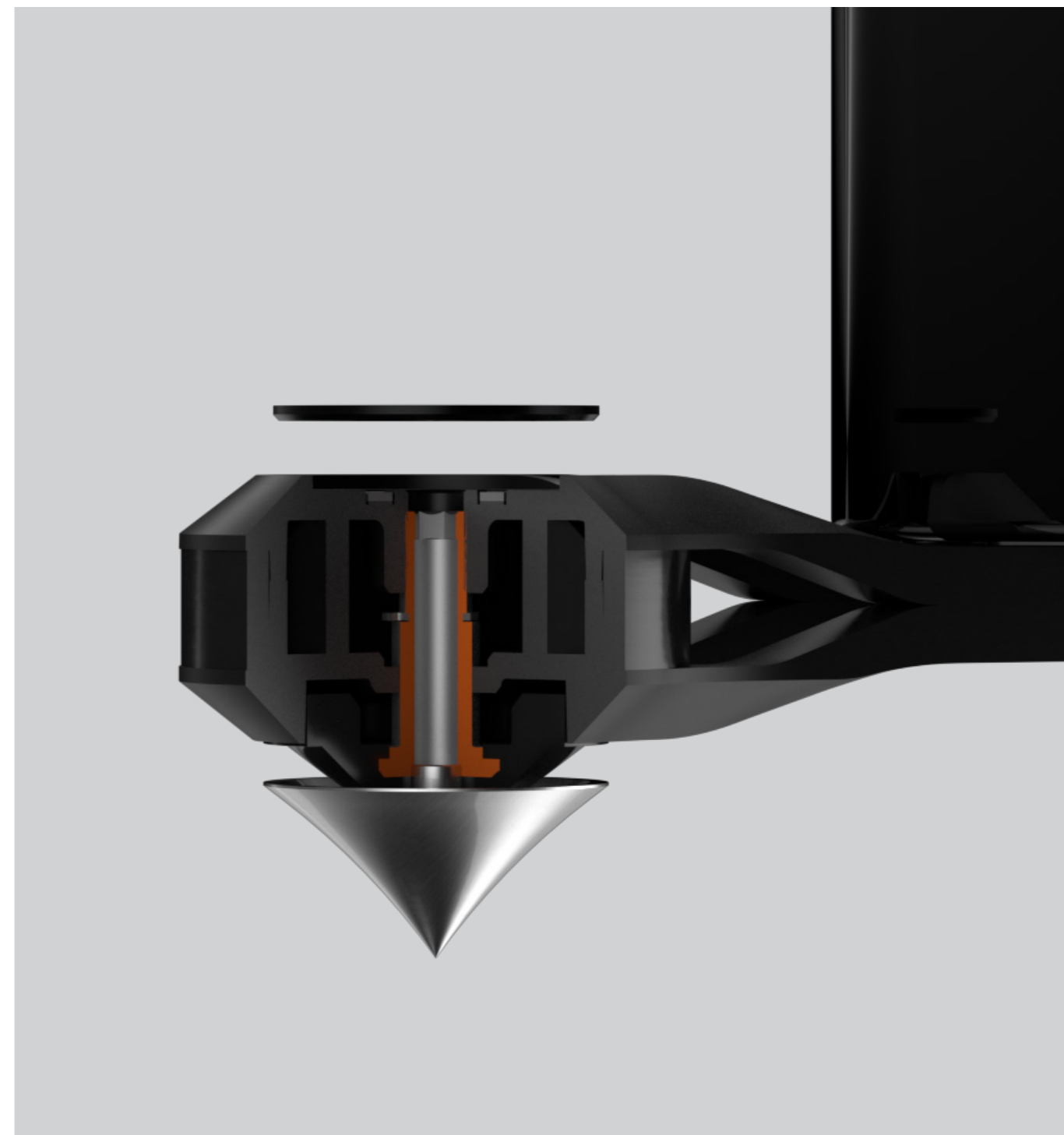
Platinum series has always represented Monitor Audio's engineering and design prowess and the 3rd generation is no exception. Our UK based design team have worked closely with the acoustic team to deliver an aesthetic which celebrates the performance components without overpowering its surroundings.





### Aluminium Driver Frames

The drivers on the Platinum Series 3G are held in place with individually cast aluminium holders, creating two layers of isolation between the driver chassis and the cabinet.

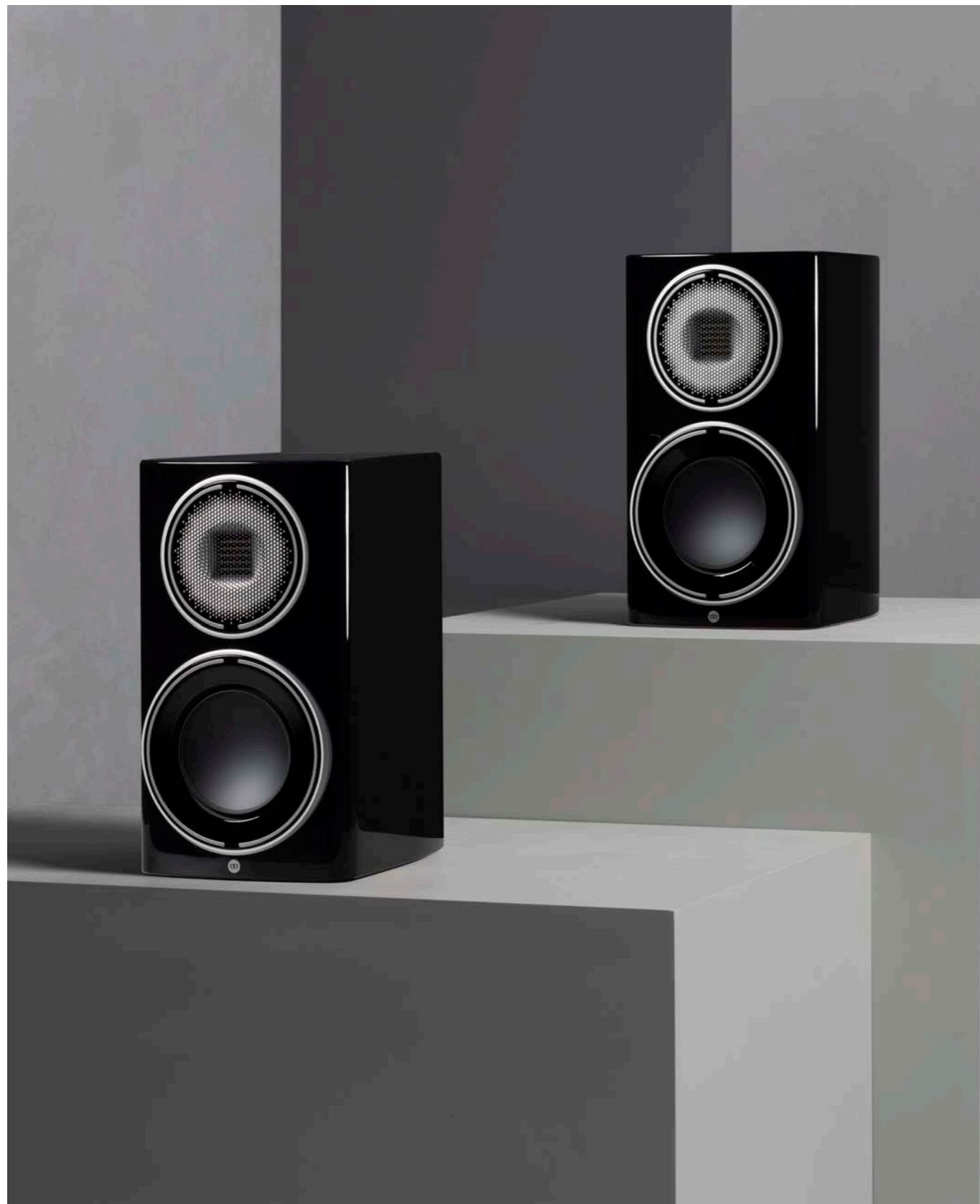


### New Outrigger Feet

The new Platinum outrigger foot assembly have been precision engineered to form a solid platform for the floor standing speakers while forming a more elegant aesthetic to a cumbersome plinth.



Platinum 300 3G in Piano Ebony



### Platinum 100 3G

The Platinum 100 3G is a compact 2-way speaker that features a MPD III transducer and 6" RDT III mid-bass driver cone. It offers an utterly compelling listening experience from a relatively small cabinet.



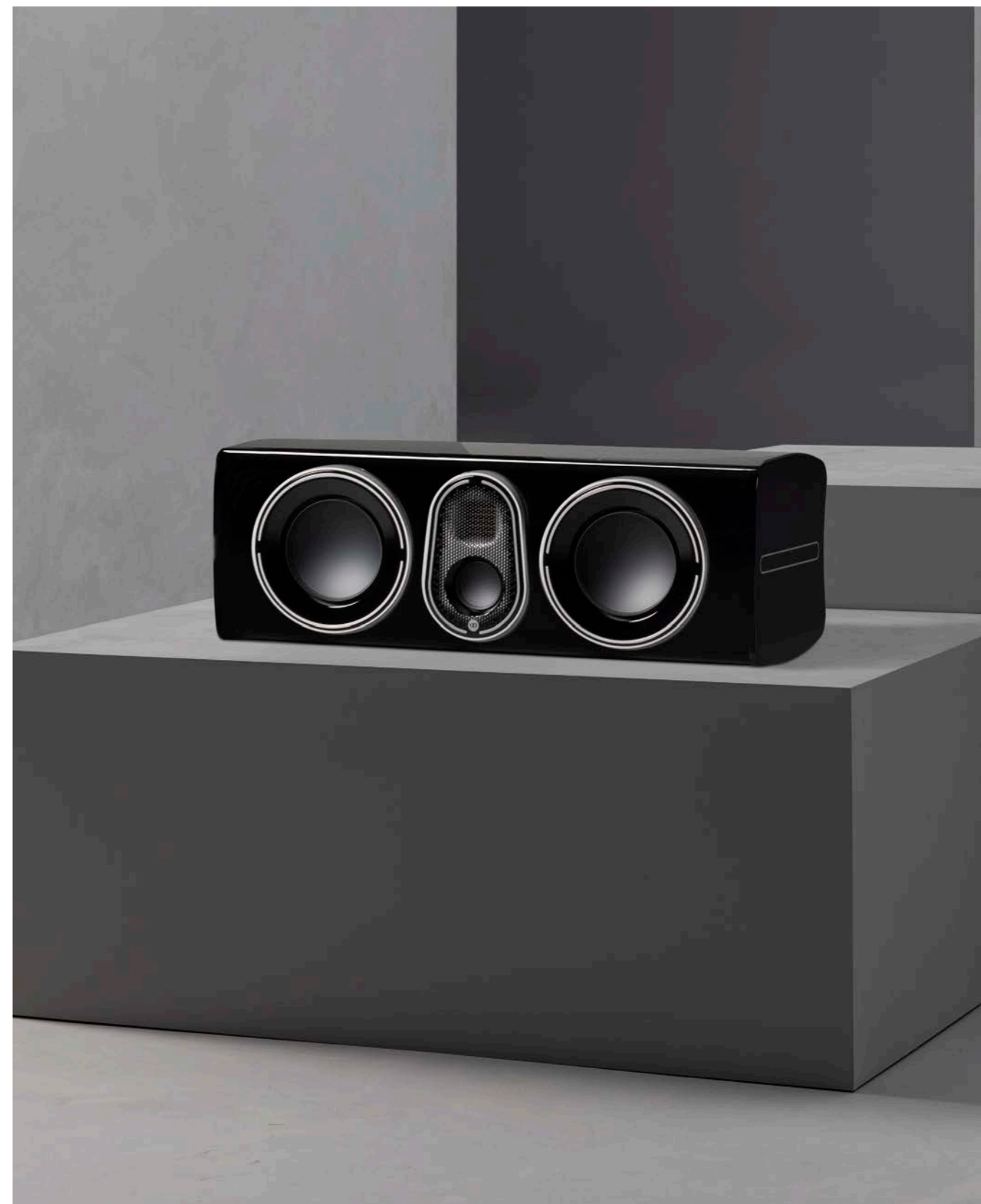
### Platinum 200 3G

The Platinum 200 3G is a slim and compact three-way floorstander, designed to deliver a rich, dynamic high-end performance with tight, controlled bass. It boasts a MPD III transducer, a 4" RDT III midrange driver and twin 6" RDT III bass drivers.



### Platinum 300 3G

The Platinum 300 3G's combination of MPD III transducer, 4" RDT III mid-range driver and two 8" RDT III bass drivers allow it to deliver exceptional scale and depth. The worthy flagship of the Platinum Series 3G, this loudspeaker is quite simply the best in its class.



### Platinum C250 3G

The Platinum C250 3G centre channel boasts an MPD III transducer, a 2,5" RDT III mid-range driver and two 6" RDT III bass drivers. It's designed to be the perfect partner with any combination of Platinum loudspeakers to create the last word in home theatre sound.



### Platinum In-Wall 3G

Platinum In-Wall 3G is Monitor Audio's flagship high-performance, architectural in-wall loudspeaker. It is designed for use in high-end theatre and two-channel stereo systems, where accurate, clear and lifelike sound is required with the minimum of room intrusion but with maximum scale and sonic impact.

Platinum In-Wall 3G can be positioned either vertically or horizontally, which means it can be utilised anywhere within a system and is ideal for LCR applications and for seamless tonal accuracy within a theatre system.

# Specifications



Model	Platinum 100 3G	Platinum 200 3G	Platinum 300 3G	Platinum C250 3G
System Format	2-way	3-way	3-way	3-way
Frequency response (-6dB) Free-Field	37 Hz - >60 kHz	32 Hz - >60 kHz	25 Hz - >60 kHz	48 Hz - >60 kHz
Frequency response (-6dB) In room	28 Hz - >60 kHz	23 Hz - >60 kHz	17 Hz - >60 kHz	30 Hz - >60 kHz
Sensitivity (2.83v @ 1m)	85 dB	88 dB	88 dB	88 dB
Nominal impedance	4 Ohms	4 Ohms	4 Ohms	4 Ohms
Minimum Impedance	4.0 Ohms @ 180 Hz	4.0 Ohms @ 2.5 kHz	4.0 Ohms @ 3.75 kHz	4.0 Ohms @ 150 Hz
Continuous Power Handling (RMS into 4 Ohms, Pink Noise with 6dB Crest Factor)	150 W	300 W	400 W	300 W
Recommended Amplifier Power (RMS into 4 Ohm, Music Signal)	75-300 W	150-600 W	200-800 W	150-600 W
Bass Alignment	HiVe II port system	HiVe II port system	Dual HiVe II port system	Sealed
Crossover Frequency	LF/HF: 2.85 kHz	LF/MF: 825 Hz/MF/HF: 3 kHz	LF/MF: 650 Hz/MF/HF: 3 kHz	LF/MF: 850 Hz/MF/HF: 3.5 kHz
Port Tuning Frequency	44 Hz	38 Hz	32 Hz	N/A
Drive Unit Complement	1 x 6" RDT III bass driver, 1 x MPD III tweeter	2 x 6" RDT III bass driver, 1 x 4" RDT III mid-range driver, 1 x MPD III tweeter	2 x 8" RDT III bass driver, 1 x 4" RDT III mid-range driver, 1 x MPD III tweeter	2 x 6" RDT III bass driver, 1 x 2.5" RDT III mid-range driver, 1 x MPD III tweeter
External Dimensions including Grille and Terminals (H x W x D)	398 x 225 x 325 mm 15 <sup>5/8</sup> x 8 <sup>13/16</sup> x 12 <sup>11/16</sup> "	1023 x 368 x 454 mm 40 <sup>3/16</sup> x 14 <sup>3/8</sup> x 17 <sup>13/16</sup> "	1113 x 430 x 525 mm 43 <sup>13/16</sup> x 16 <sup>7/8</sup> x 20 <sup>5/8</sup> "	225 x 630 x 326 mm 8 <sup>13/16</sup> x 24 <sup>13/16</sup> x 12 <sup>13/16</sup> "
External Dimensions including Outrigger Feet and Spikes (H x W x D)	N/A	1040 x 368 x 454 mm 40 <sup>7/8</sup> x 14 <sup>3/8</sup> x 17 <sup>13/16</sup> "	1129 x 430 x 525 mm 44 <sup>3/8</sup> x 16 <sup>7/8</sup> x 20 <sup>5/8</sup> "	N/A
Weight (Each)	15.2 kg 33 lb 8 oz	35.8 kg 78 lb 14 oz	53.6 kg 118 lb 2 oz	25.4 kg 55 lb 15 oz
Finishes	Piano Ebony, Piano Black, Matte White			

Model	Platinum In-Wall 3G
System Format	3-way
Frequency response (-6dB) Free-Field	41 Hz - >60 kHz
Frequency response (-6dB) In room	27 Hz - >60 kHz
Sensitivity (2.83v @ 1m)	88 dB
Nominal impedance	4 Ohms
Minimum Impedance	4.1 Ohms @ 1.6 kHz
Continuous Power Handling (RMS into 4 Ohms, Pink Noise with 6dB Crest Factor)	300 W
Recommended Amplifier Power (RMS into 4 Ohm, Music Signal)	150-600 W
Bass Alignment	Sealed
Crossover Frequency	LF/MF: 825 Hz/MF/HF: 3 kHz
Port Tuning Frequency	N/A
Drive Unit Complement	2 x 6" RDT III bass driver, 1 x 4" RDT III mid-range driver, 1 x MPD III tweeter
External Dimensions including Grille and Terminals (H x W x D)	1207 x 332 x 105.5 mm 47 <sup>9/16</sup> x 13 <sup>1/16</sup> x 4 <sup>1/16</sup> "
Cut Out Dimensions	1175 x 300 x 97.5mm 46 <sup>1/4</sup> x 11 <sup>3/16</sup> x 3 <sup>13/16</sup> "
Weight (Each)	27.7 kg 61 lb

Learn more about Platinum Series 3G at [monitoraudio.com/platinum](http://monitoraudio.com/platinum)



Monitor Audio Ltd.  
24 Brook Road  
Rayleigh, Essex  
SS6 7XJ  
England  
Tel: +44 (0)1268 740580  
Email: [info@monitoraudio.group](mailto:info@monitoraudio.group)

**monitoraudio.com**